



# 2023

44th Annual Conference for Behavioral Health



The 44th Annual Conference for Behavioral Health is presented by the Association of Community Mental Health Centers of Kansas. We provide educational opportunities to increase awareness of emerging trends, build skills and knowledge to provide behavioral health care, and advocate for policy change.



222 SW 7th Street, Topeka, KS 66603  
Telephone (785) 234-4773 | Fax (785) 234-3189  
[www.acmhck.org](http://www.acmhck.org)

## Table of Contents

|    |   |
|----|---|
| 1  | Welcome Letter from Executive Director Kyle Kessler |
| 2  | Sponsor Appreciation                                |
| 3  | Featured Speakers                                   |
| 4  | Association Page                                    |
| 5  | Continuing Education Information                    |
| 9  | Schedule of Events                                  |
| 13 | Floor Plan  |
| 14 | Exhibitor Map & List                                |

## Save the Date for 2024

The 2024 Conference will be held September 18-20, 2024 at the Hilton Garden Inn  
Manhattan, 410 S 3rd Street, Manhattan, KS 66502

## 2023 Conference Awards & Awardees

Public Official of the Year Award – Representative Susan Ruiz

VJ Reddy Award – Dr. Mark Romereim, MD

Wes Cole Public Servant of the Year Award – Charles Bartlett

Mental Health First Aid Trainer of the Year – Monica Simpson

## Welcome to the 2023 Annual Conference for Behavioral Health!

I want to start by thanking you all for the incredible work you have done over the last year. From the aftermath of the pandemic to the continuing effects of social media on children and families to the transformation of our entire system to the Certified Community Behavioral Health Clinic (CCBHC) model, the last year has been a lot.

In many years, I have started off my comments to our conference attendees by jokingly commenting, “So what’s new with you all?” In those years, it was barely funny as the sarcastic implication is intended to recognize how busy you all are and how driven you are to improve the lives of the people treated or served by our system. This year that joke would fall flat for sure and potentially and justifiably result in the throwing of rotting fruits or vegetables at me. The transformation of our whole system to the CCBHC model along with a staggering workforce shortage has resulted in an exhausting pace.

As we work to influence and improve the communities in our state with our vision and values, it becomes very easy to be distracted or pulled in multiple directions at once. Sometimes that is unavoidable as urgent or emergent situations are part of the responses our system may need to provide. As U.S. Senator Roger Marshall recently commented in a Senate committee hearing on Capital Hill, “We must value what we measure and measure what we value.” To this end, our focus going forward will be establishing and sustaining the excellence of the Kansas behavioral health safety net through ensuring timely access to high quality services, providing premiere training and education opportunities, and being an incubator of innovation. Continued focus on these areas will lead us to being an elite system that is not only sought out for treatment and services but as a destination for learning and employment.

We would like to highlight and express our appreciation to our 2023 conference sponsors. The Association is able to provide this learning opportunity because of the valued partnership between our organization and our sponsors such as the Platinum Sponsors including Conrade Insurance Group, Kansas Department for Aging and Disability Services, Aetna Better Health, innovaTel, UnitedHealthcare Community Plan of Kansas, Caresource, Sunflower Health Plan, and Molina Healthcare; Gold Sponsors including HealthSource Integrated Solutions and Compliance One, Camber Children’s Mental Health, Teva Pharmaceuticals, Mid-America Addiction Technology Transfer Center, and Netsmart; Evening Reception Sponsor Molina Healthcare; Refreshment Break Sponsors including Ucare and CareSource; Silver Sponsors including Ucare, Mid-America Mental Health Technology Transfer Center, Neurocrine Biosciences, Johnson County Mental Health Center, and Integrated Psychiatric Consultants; and Bronze Sponsors including Bert Nash Community Mental Health Center, Qualifacts, Eleos Health, Johnson and Johnson Health Care Systems, Inc., Streamline Healthcare Solutions, Centurion Health, Mission Driven Data, Valley Hope Addiction Treatment, Mirah, and University of Kansas School of Social Welfare.

We hope that the next several days provide you with education, connection, and a bit of an opportunity to exhale. You have earned it. Enjoy the conference.

Best always,



Kyle Kessler  
Executive Director, Association of Community Mental Health Centers of Kansas



# THANK YOU SPONSORS!

## PLATINUM



## GOLD



## REFRESHMENT

## RECEPTION



## SILVER



## BRONZE



## Featured Speakers



### **Chuck Ingoglia**

Chuck is the president and CEO for the National Council for Mental Wellbeing. With more than 20 years of experience in behavioral health, he has worked as a provider, advocate, and educator for government and public sector organizations.

Prior to becoming President and CEO of the National Council for Behavioral Health, he served as the Senior VP of Public Policy and Practice Improvement. He also serves as adjunct faculty at the George Washington University Graduate School of Political Management.



### **Ed O'Malley**

Ed O'Malley is president and CEO of the Kansas Health Foundation. He founded the Kansas Leadership Center in 2007, serving as president and CEO for 15 years. A former Kansas state legislator and gubernatorial aide, Ed has co-authored three previous books including *Your Leadership Edge* and *For the Common Good*.



### **Hasan Davis**

Hasan believes that each child can and will succeed if the adults in their world create hope. His journey as a Hope Dealer began as an Upward Bound counselor and a teaching artist and continued through his years as a violence prevention specialist and as Commissioner of Juvenile Justice for the Commonwealth of Kentucky.

Today, as a speaker, author, and coach, Hasan supports Hope Dealers across the world as they work to ensure all children are safe, healthy, and supported on their path to success.



### **Briana Nelson Goff**

Dr. Briana Nelson Goff is a professor at Kansas State University, in Manhattan, Kansas. Her clinical experience and research focus on primary and secondary traumatic stress symptoms in couples and families.

During her 30-year career, Dr. Nelson Goff worked with hundreds of people through her research and clinical work. Each one impacted her work, teaching her about resilience, hope, and healing from trauma, which led to authoring her first book, *Bulletproof Vows: Stories of Couples Navigating Military Deployments and Life's Battles* (January 2023, New Degree Press).

## ACMHCK Staff & Board Members

### ACMHCK Staff

Kyle Kessler, Executive Director  
Michelle Ponce, Associate Director  
Sue Murnane, Youth Behavioral Health Services Manager  
Andrea De Buezo, Special Projects Coordinator  
Heather Richardson, Member Services Manager  
Kay Swietek, Office Manager

Bert Nash Community Mental Health Center – Est. 1950

**Patrick Schmitz, CEO**

Central Kansas Mental Health Center - Est. 1964  
**Glenna Phillips, Executive Director**

COMCARE of Sedgwick County – Est. 1961  
**Joan Tammany, Executive Director**

Community Mental Health Center of Crawford County – Est. 1968

**Heather Spaur, Executive Director**

Compass Behavioral Health – Est. 1961  
**Lisa Southern, Executive Director**

CrossWinds Counseling and Wellness – Est. 1960  
**Amanda Cunningham, CEO**

Elizabeth Layton Center – Est. 1961  
**Leslie Bjork, Executive Director**

Family Service and Guidance Center – Est. 1904  
**Kathy Mosher, CEO**

Four County Mental Health Center – Est. 1964  
**Greg Hennen, Executive Director**

High Plains Mental Health Center – Est. 1964  
**Walter Hill, Executive Director**

Horizons Mental Health Center – Est. 1968  
**Vikki Mader, CEO**

Iroquois Center for Human Development – Est. 1968  
**Mary Jane Dowler, Executive Director**

Johnson County Mental Health Center – Est. 1962  
**Tim DeWeese, Director**

Kanza Mental Health and Guidance Center – Est. 1963  
**Jackie Feathers, CEO**

Labette Center for Mental Health Services – Est. 1979  
**Matthew Atteberry, Executive Director**

Pawnee Mental Health Services – Est. 1956  
**Robbin Cole, Executive Director**

Prairie View, Inc. – Est. 1954  
**Marcy Johnson, President & CEO**

South Central Mental Health Counseling Center, Inc. – Est. 1962  
**Michael Countryman, Executive Director**

Southeast Kansas Mental Health Center – Est. 1965  
**Nathan Fawson, Executive Director**

Southwest Guidance Center – Est. 1937  
**Marshall Lewis, Executive Director**

Spring River Mental Health and Wellness – Est. 1981  
**Stacy Manbeck, Executive Director**

Sumner Mental Health Center – Est. 1983  
**Jeanne Brown, Executive Director**

The Center for Counseling and Consultation – Est. 1967  
**Julie Kramp, Executive Director**

The Guidance Center – Est. 1937  
**Adam Buhman-Wiggs, Executive Director**

Valeo Behavioral Health Care – Est. 1967  
**Bill Persinger, CEO**

Wyandot Behavioral Health Network – Est. 1953  
**Randy Callstrom, President/CEO**

# Continuing Education

## OVERVIEW

The Annual Conference for Behavioral Health provides educational opportunities to increase awareness of emerging trends, build skills and knowledge to provide behavioral health care, and advocate for policy change.

## TARGET AUDIENCE

Behavioral health providers including executive leaders, physicians, clinicians, nurses, social workers, therapists, and other healthcare providers

## OBJECTIVES

At the completion of this conference, participants should be able to:

- Apply best and emerging practices in the provision of mental and behavioral health services and treatment of substance use disorders, grief disorder, ADHD, and trauma
- Describe the key components of the CCBHC model; summarize the program and reporting requirements; and describe approaches to measuring productivity within a CCBHC
- Summarize the key tenets of care coordination
- Explain the vision of peer services in Kansas, and summarize the status of youth and adult peer services programs in Kansas
- Manage and navigate sensitive conversations about race, equity, and the human experience
- Implement effective leadership
- Explain the significance of the intersection of mental health and the criminal justice system and identify promising practices to support consumers engaged in both systems
- List ethical concerns that may arise during treatment
- Describe the evidence-base practices of ART and IPS
- Summarize the status of various crisis programs in Kansas including 988, youth crisis, and mobile crisis response

**Note: At program publishing, the full credit amount has not yet been fully calculated. A hardcopy addendum containing the full credit statement, speaker disclosures and instructions will be provided at the start of the conference. The addendum will also be added to the conference app, acmhck.org website, and program e-version at the start of the conference.**

# Continuing Education Addendum Pg 1 of 2

## 2023 ACMHCK Annual Conference for Behavioral Health September 12 – 15, 2023 | Hotel Topeka at City Center | Topeka, KS Continuing Education Syllabus

### Course Overview

The 2023 Annual Conference for Behavioral Health is presented by the Association of Community Mental Health Centers of Kansas. Educational opportunities are provided to increase awareness of emerging trends, build skills and knowledge to provide behavioral health care, and advocate for policy change.

### Target Audience

This conference is designed for behavioral health providers, including executive leaders, physicians, clinicians, nurses, social workers, therapists, and other healthcare providers.

### Learning Objectives

At the completion of this conference, participants should be able to:

1. Apply best and emerging practices in the provision of mental and behavioral health services and treatment of substance use disorders, grief disorder, ADHD, and trauma.
2. Describe the key components of the CCBHC model; summarize the program and reporting requirements; and describe approaches to measuring productivity within a CCBHC.
3. Summarize the key tenets of care coordination.
4. Explain the vision of peer services in Kansas, and summarize the status of youth and adult peer services programs in Kansas
5. Manage and navigate sensitive conversations about race, equity, and the human experience
6. Implement effective leadership
7. Explain the significance of the intersection of mental health and the criminal justice system and identify promising practices to support consumers engaged in both systems
8. List ethical concerns that may arise during treatment
9. Describe the evidence-base practices of ART and IPS
10. Summarize the status of various crisis programs in Kansas including 988, youth crisis, and mobile crisis response

### Accreditation

This activity has been planned and implemented in accordance with the essential areas and policies of the Accreditation Council for Continuing Medical Education through the joint providership of the University of Kansas Medical Center Office of Continuing Medical Education and ACMHCK. The University of Kansas Medical Center Office of Continuing Medical Education is accredited by the ACCME to provide continuing medical education for physicians.

**Physicians:** The University of Kansas Medical Center Office of Continuing Medical Education designates this live activity for a maximum of 16.25 *AMA PRA Category 1 Credits*™. Physicians should claim only the credit commensurate with the extent of their participation in the activity.

**Social Workers:** The University of Kansas Medical Center Area Health Education Center East, as an approved provider of continuing education by the Kansas Behavioral Sciences Regulatory Board, presents this offering for a maximum of 16.25 hours credit applicable for relicensure of LASWs, LBSWs, LMSWs and LSCSWs. Kansas Provider Number 12-002. Mary Beth Warren, MS, RN, coordinator.

**Social Work attendance requirement:** Presentations must be attended in their entirety to claim credit.

**APRNs/Nurses:** The University of Kansas Medical Center Area Health Education Center East is approved as a provider of CNE by the Kansas State Board of Nursing. This course offering is approved for 19.5 contact hours applicable for APRN or RN relicensure. Kansas State Board of Nursing provider number: LT0056-0749. Mary Beth Warren, MS, RN, Coordinator.

**Nursing attendance requirement:** Presentations must be attended in their entirety to claim credit. Nurses must attend a minimum of 30 minutes (0.6 contact hours) of this course to receive credit.



# Continuing Education Addendum Pg 2 of 2

## Courses Unavailable for Continuing Education (CE) Credit

Please be aware that some courses at this event will not be available for all three credit types (CME, CNE, and SW) and are noted below. *The credit types that are available are listed in parentheses.*

- September 12
  - CMHC Supervisor Training (none)
- September 13
  - Opening Remarks/General Session (none)
  - Crosswalk Between IPS and VR (SW)
  - SPQM Overview (none)
  - Mental Health in Jails (SW)
  - Tricare Overview (none)
- September 14
  - Panel: Measuring Productivity (none)
  - Financial Manager's Roundtable (none)
  - Panel: YLink (SW)
  - Employment Law Parts 1 and 2 (none)
  - K-TRACS (CME, CNE(APRN only))
  - Annual Cost Reporting (none)
  - Utilizing Data/Business Decisions (none)
  - Specialty Courts in KS (SW)

## Planning Committee and Speaker Disclosure Information

The following individuals have no financial relationship(s) with ineligible companies whose primary business is producing, marketing, selling, re-selling, or distributing healthcare products used by or on patients:

Jeff Cames, Kyle Kessler, Susan Lopez, Heather Richardson, Shantel Westbrook, Amanda Cunningham, Stacy Kratz, Michelle Ponce, Laura Sidlinger, Jennifer Woodson, John Agnew, Becky Austin-Morris, NP-BC, David Barnum, PhD, PhD, Charles Bartlett, Isabelle Blackwood, Melissa Bogart Starkey, Chelsea Booth, John Bosch, JD, Bryson Bower, LCP, Christina Boyd, MSW, LSCSW, LCAC, Julie Branstom, Andrew Brown, MSW, KCPM, Keona Brown, Vicki Broz, LMSW, LMAC, Shannon Bruegge, Angie Baungardt, LMSW, Linda Buchheister, BA, Certified Public Manager, Ulisa Diane Buckingham, MD, Holly Cavender, MSW, Ramone Chavez, Shedreese Colding-Scott, Brian Cole, Jennifer Cox, MA, Lyndsey Crisenbery, Hasan Davis, Shelina Davis, Dan Decker, Timothy DeWeese, LMSW, Gayle Donaldson, MBA, Travis Freed, LP, Kimberly Freese, MA, Michael Garrett, MS, LCP, Lance Geyer, Lori Gonzales, Jordan Graves, Jason Hess, LCAC, Walter Hill, LCP, Melissa Hoffman, DNP, PMHNP-BC, Ben Holloway, Laura Howard, Charles Ingoglia, MSW, Annie Jensen, David Jordan, Sawyer Jurgensmeier, Kyle Kessler, MPA, Mindi Kessler, Josh Klamm, BS, Quinn Lewandowski, MS, Jamie Malone, APRN, PMHNP-BC, Lori Martin, Andres Mata, Susan Mills, Itzel Moya, Suzanne Mumane, LMSW, Lisa Neitzke, Briana Nelson Goff, Ed O'Malley, Ruth Owens-Jurgens, LCP, Anna Palermo, Tim Phelps, Sally Pokorny, Michelle Ponce, Sandra Reese, LaTonya Rice, PharmD, BS, BCGP, Marikie Ridgway, Judith Rodman, Celia Ruiz, Susan Ruiz, Heather Rush, Chrissy Russell, LSCSW, Clara Sainte, MSW, LSCSW, Erika Saleski, Angela Schindler-Berg, Jessica Sherfick, LSCSW, LAC, Mark Simpson, Monica Simpson, MLS, Cassandra Sines, Gordon Smith, LAC, Marla Smith, CRT, Austin Solis, MS, Brenda Soto, LSCSW, Lisa Southern, LMLP, LCP, Janet Stanek, Anthony Strickland, MD, Colin Thomasset, Kelsey Torrez, MPA, Beth Van Vleck, Jodi Wall, Daniel Warren, MD, Family Medicine, Mary Warren, Jennie Watson, LSCSW, April White, Jani White, Zac Wilson, Robert Wonnell, JD, Sharon Zehr, Chris Zuerchar.

All conflicts have been mitigated.

Unless otherwise announced prior to the session or noted in course materials, this activity does not include any information about off-label use of a product for a purpose other than that for which it was approved by the Food and Drug Administration (FDA).

## Instructions for Claiming CE

**00jube** is the six-digit sign-in code

Options for signing in

1. Text the code to 828-295-1144  
OR
2. Go to eeds.com > Click the 'sign into an event' button > enter the code  
OR
3. Download the eeds app and submit the code

ACMHCK's agreement with KU Medical Center gets you a complimentary account with eeds. From your personalized account, you can claim CE, complete evaluations, and print certificates in one place.

When you submit the activity code, you will be presented with a checklist of eligible CE courses at this conference. You can modify the attendance checklist as the week progresses. Questions? Email Paul Hartley [phartley@kumc.edu](mailto:phartley@kumc.edu)

## Continuing Education Access

## Schedule of Events - Tuesday, Sept. 12

### Preconference

| TIME                   | SESSION   | SPEAKER(S)   | ROOM      |
|------------------------|---|--|-----------|
| 8:00 a.m. - 5:00 p.m.  | Registration Open   |  | Foyer     |
| 9:00 a.m. - 5:00 p.m.  | MTM Services Is Taking DLA-20 Support Tools to a Whole New Level! | Annie Jensen   | Bison     |
| 9:00 a.m. - 5:00 p.m.  | CMHC Supervisor Training  | Wendy Lockwood, Jennie Watson, Shantel Westbrook, Leonard Kaiser | River     |
| 12:00 p.m. - 1:00 p.m. | Lunch Break   |  | Foyer     |
| 1:00 p.m. - 4:00 p.m.  | MHFA Summit   | Monica Simpson Sue Murnane, Jennifer Cox, Celia Ruiz             | Homestead |

## Schedule of Events - Wednesday, Sept. 13

| TIME                    | SESSION  | SPEAKER(S)  | ROOM               |
|-------------------------|--|---|--------------------|
| 7:00 a.m. - 8:00 a.m.   | Breakfast Buffet   |   | Sunflower Ballroom |
| 7:00 a.m. - 5:00 p.m.   | Registration Open  |   | Foyer              |
| 8:00 a.m. - 5:00 p.m.   | Exhibits Open  |   | Shawnee Ballroom   |
| 8:00 a.m. - 8:30 a.m.   | GENERAL SESSION: Opening Remarks   | Kyle Kessler  | Sunflower Ballroom |
| 8:30 a.m. - 9:15 a.m.   | GENERAL SESSION: Updates from Laura and Chuck  | Laura Howard, Chuck Ingoglia  | Sunflower Ballroom |
| 9:15 a.m. - 9:30 a.m.   | Coffee Break   |   |                    |
| 9:30 a.m. - 10:45 a.m.  | BREAKOUT: Hot Topics in Healthcare Policy  | Chuck Ingoglia, Laura Howard, Tom Coderre, Janet Stanek, Michelle Ponce         | Sunflower Ballroom |
| 9:30 a.m. - 10:45 a.m.  | BREAKOUT: Peer Group and Individual Supervision in a Treatment Setting                       | Ruth Owens-Jurgens  | Homestead          |
| 9:30 a.m. - 10:45 a.m.  | BREAKOUT: Federal and Kansas Perspectives on 988   | Chelsea Booth, Andy Brown   | Pioneer            |
| 9:30 a.m. - 10:45 a.m.  | BREAKOUT: Screen Sanity: The Impact of Technology and Social Media on Mental Health          | Tim DeWeese   | Emerald III-V      |
| 9:30 a.m. - 10:45 a.m.  | BREAKOUT: Diagnosing Prolonged Grief Disorder  | Clara Sainte  | Emerald I & II     |
| 9:30 a.m. - 10:45 a.m.  | BREAKOUT: SPQM Overview  | Wendy Lockwood  | Wheat              |
| 9:30 a.m. - 10:45 a.m.  | BREAKOUT: A Crosswalk Between IPS and VR: What Does That Look Like in Kansas?                | Sandra Reese, Jani White, Jodi Wall, Beth Van Vleck, Chris Zuercher, Dan Decker | River              |
| 9:30 a.m. - 10:45 a.m.  | BREAKOUT: Implementation of SBIRT and Prevention of Substance Use Disorders                  | Christina Boyd  | Bison              |
| 10:45 a.m. - 11:00 a.m. | Coffee Break   |   |                    |
| 11:00 a.m. - 12:00 p.m. | GENERAL SESSION: Calling All Hope Dealers! Everyone Has a Story, Every Story Deserves Heroes | Hasan Davis   | Sunflower Ballroom |
| 12:00 p.m. - 1:30 p.m.  | Lunch and Awards Ceremony  |   | Sunflower Ballroom |

|                       |   |   |                    |
|-----------------------|---|---|--------------------|
| 1:30 p.m. - 1:45 p.m. | Coffee Break  |   |                    |
| 1:45 p.m. - 3:00 p.m. | BREAKOUT: Panel: Crisis for Youth – Running a Successful Program  | Colin Thomasset, Travis Freed, Vicki Broz, Ramone Chavez, Lisa Southern   | Pioneer            |
| 1:45 p.m. - 3:00 p.m. | BREAKOUT: Learn What Kind Of Leader You Are And How To Become A More Empowering Leader                  | Mike Garrett  | Emerald III-V      |
| 1:45 p.m. - 3:00 p.m. | BREAKOUT: Mental Health in Jails  | Brian Cole, Tim Phelps  | Bison              |
| 1:45 p.m. - 3:00 p.m. | BREAKOUT: Panel: The Vision for Peer Services in Kansas Recovery  | Linda Buchheister, Charles Bartlett   | Homestead          |
| 1:45 p.m. - 3:00 p.m. | BREAKOUT: 2023 Legislative Recap and 2024 Forecast  | Kyle Kessler, Representative Susan Ruiz, Senator Brenda Dietrich, Senator Kristen O'Shea, Representative Vic Miller | River              |
| 1:45 p.m. - 3:00 p.m. | BREAKOUT: Care Coordination Is the Cornerstone of a Successful CCBHC                                    | April White, Shedreese Colding-Scott, Heather Rush  | Emerald I & II     |
| 1:45 p.m. - 3:00 p.m. | BREAKOUT: Accelerated Resolution Therapy (ART): An EBP Alternative to Talk Therapy for CMHCs            | Mary Warren   | Sunflower Ballroom |
| 1:45 p.m. - 3:00 p.m. | BREAKOUT: Perinatal Mental Health: Identification and Treatment Best Practices                          | Kelsee Torrez, Melissa Hoffman, Anna Palermo  | Wheat              |
| 3:00 p.m. - 3:30 p.m. | Nutrition Break Sponsored by Ucare  |   | Foyer              |
| 3:30 p.m. - 4:45 p.m. | BREAKOUT: Community Health Workers: An Update on the Changing Landscape Nationally and in Kansas        | David Jordan, Erika Saleski   | Bison              |
| 3:30 p.m. - 4:45 p.m. | BREAKOUT: Panel: Peer Support From Prison to the Community  | John Agnew, Jason Hess, Ben Holloway, Gordon Smith  | Wheat              |
| 3:30 p.m. - 4:45 p.m. | BREAKOUT: Panel: Demystifying Gender Affirming Medical Care for Community Mental Health Providers       | Jordan Graves, Markie Ridgway, Anthony Strickland, Judith Rodman, Sawyer Jurgensmeier                               | Sunflower Ballroom |
| 3:30 p.m. - 4:45 p.m. | BREAKOUT: Comprehensive Youth Suicide Prevention In Nebraska – What You Can Learn From Their Experience | Quinn Lewandowski   | Homestead          |
| 3:30 p.m. - 4:45 p.m. | BREAKOUT: Closing the Gap: Working With Individuals With Intellectual/Developmental Disabilities (I/DD) | Lisa Neitzke  | Emerald III-V      |
| 3:30 p.m. - 4:45 p.m. | BREAKOUT: Tricare Overview  | Jim McKillop  | Pioneer            |
| 3:30 p.m. - 4:45 p.m. | BREAKOUT: CCBHC Program Requirements: From Checklist to Providing Effective Care                        | Mike Garrett  | Emerald I & II     |
| 3:30 p.m. - 4:45 p.m. | BREAKOUT: Advancing Integrated Care: Two Models for Serving the Community                               | Walt Hill, Julie Branstrom  | River              |
| 5:00 p.m. - 6:30 p.m. | Evening Reception Sponsored by Molina Healthcare  |   | Sunflower Ballroom |

## Schedule of Events - Thursday, Sept. 14

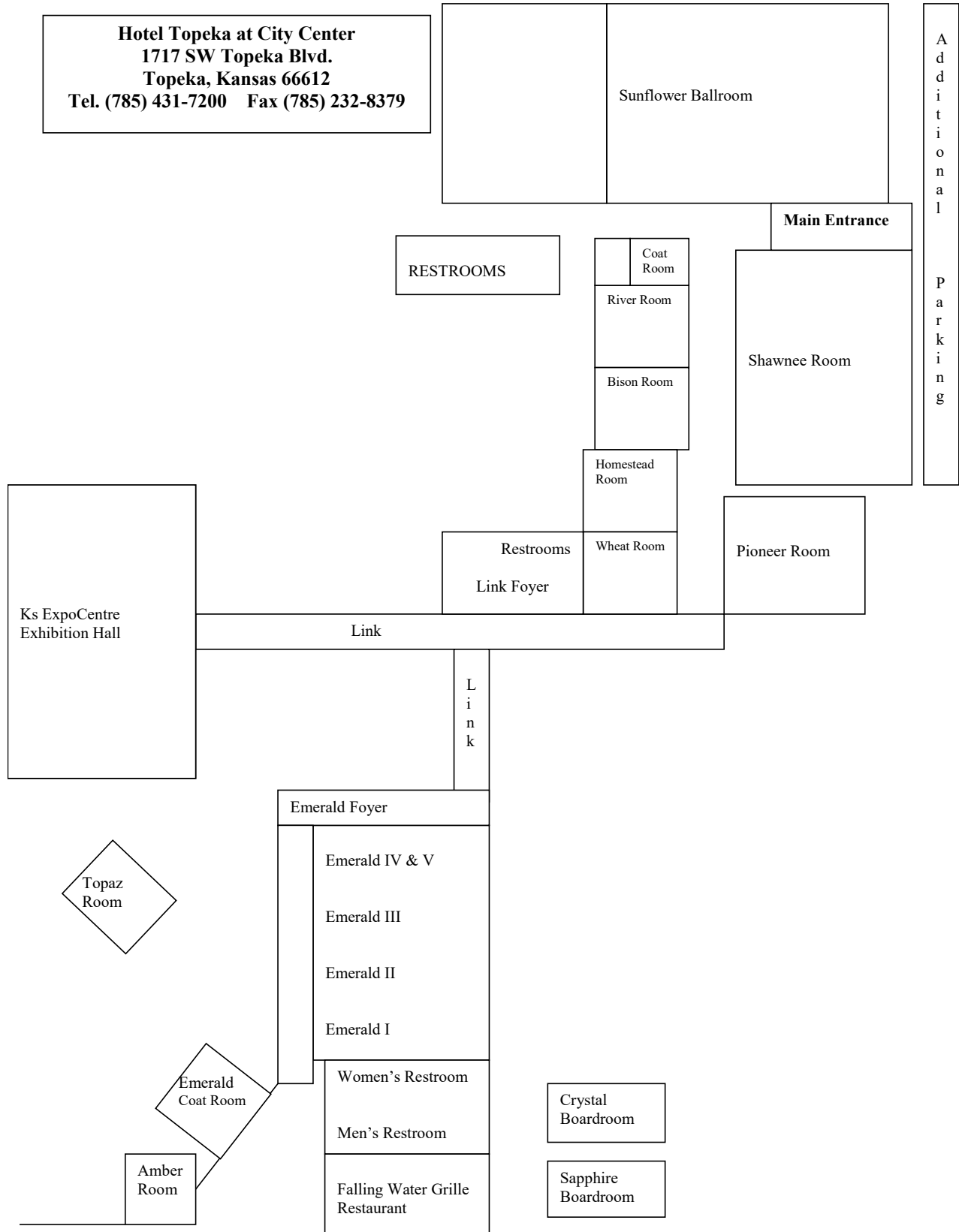
| TIME                    | SESSION   | SPEAKER(S)  | ROOM               |
|-------------------------|---|---|--------------------|
| 7:00 a.m. - 8:00 a.m.   | Breakfast Buffet  |   | Sunflower Ballroom |
| 7:00 a.m. - 5:00 p.m.   | Registration Open   |   | Foyer              |
| 8:00 a.m. - 5:00 p.m.   | Exhibits Open   |   | Shawnee Ballroom   |
| 8:00 a.m. - 9:15 a.m.   | GENERAL SESSION: When Everyone Leads  | Ed O'Malley   | Sunflower Ballroom |
| 9:15 a.m. - 9:30 a.m.   | Coffee Break  |   |                    |
| 9:30 a.m. - 10:45 a.m.  | BREAKOUT: ADHD Update   | Dr. David Barnum  | Emerald I & II     |
| 9:30 a.m. - 10:45 a.m.  | BREAKOUT: The Louisiana Public Health Institute's Journey Toward Health Equity                              | Shelina Davis   | Pioneer            |
| 9:30 a.m. - 10:45 a.m.  | BREAKOUT: Safety in Mobile Crisis Response  | Chrissy Russell, Sgt. Josh Klamm  | Emerald III-V      |
| 9:30 a.m. - 10:45 a.m.  | BREAKOUT: Ethical Considerations When Building a Digital Presence in Rural Behavioral Health                | Christina Boyd  | River              |
| 9:30 a.m. - 10:45 a.m.  | BREAKOUT: Financial Managers Roundtable   | Jerry McDonald  | Bison              |
| 9:30 a.m. - 10:45 a.m.  | BREAKOUT: Panel: Measuring Productivity Within a CCBHC  | Tim DeWeese, Shaun Dierker, Jennifer Kaufman, Vikki Mader   | Sunflower Ballroom |
| 9:30 a.m. - 10:45 a.m.  | BREAKOUT: Panel: Mental Health Intervention Program (MHIT)  | Lance Geyer, Sue Murnane, Angie Brungardt, Susan Mills, Jennie Watson, Austin Solis, Jamie Malone, Lyndsey Crisenbery | Homestead          |
| 9:30 a.m. - 10:45 a.m.  | BREAKOUT: Panel: YLinK the Youth Voice  | Linda Buchheister, Lori Martin, Isabelle Blackwood, Andres Mata   | Wheat              |
| 10:45 a.m. - 11:00 a.m. | Coffee Break  |   |                    |
| 11:00 a.m. - 12:00 p.m. | GENERAL SESSION: Bulletproof Vows: Stories of Couples Navigating Deployments and Life's Battles             | Briana Nelson Goff  | Sunflower Ballroom |
| 12:00 p.m. - 1:30 p.m.  | Lunch   |   | Sunflower Ballroom |
| 1:30 p.m. - 1:45 p.m.   | Coffee Break  |   |                    |
| 1:45 p.m. - 3:00 p.m.   | BREAKOUT: The State of AOT in Kansas  | Robert Wonnell, John Bosch, Jessica Sherfick, Itzel Moya, Keona Brown, Dawn Huddleston                                | Pioneer            |
| 1:45 p.m. - 3:00 p.m.   | BREAKOUT: Familiar Faces Initiative(FFI): Improving Outcomes Through Coordinated Health and Justice Systems | Tim DeWeese   | Homestead          |
| 1:45 p.m. - 3:00 p.m.   | BREAKOUT: K-TRACS Use for SUD Treatment and Controlled Substance Prescribing                                | Gayle Donaldson, LaTonyua Rice  | Wheat              |
| 1:45 p.m. - 3:00 p.m.   | BREAKOUT: A Brief History and Fidelity of Assertive Community Treatment (ACT)                               | Marla Smith, Angela Schindler-Berg, Zac Wilson  | Sunflower Ballroom |
| 1:45 p.m. - 3:00 p.m.   | BREAKOUT: Annual Cost Reporting With CCBHC  | Shaun Dierker, Matthew Mackey   | River              |
| 1:45 p.m. - 3:00 p.m.   | BREAKOUT: The Cycle Breaker Way: Helping Clients Heal From Developmental Trauma                             | Mindi Kessler   | Emerald III-V      |
| 1:45 p.m. - 3:00 p.m.   | BREAKOUT: Employment Law Part 1   | Gregory Meihn   | Bison              |
| 1:45 p.m. - 3:00 p.m.   | BREAKOUT: The Costs of Caring: The Ethics of Self-Care for Professionals Working With Trauma Survivors      | Briana Nelson Goff  | Emerald I & II     |
| 3:00 p.m. - 3:30 p.m.   | Nutrition Break Sponsored by CareSource   |   | Foyer              |

|                       |  |  |                    |
|-----------------------|--|--|--------------------|
| 3:30 p.m. - 4:45 p.m. | BREAKOUT: Out of the River, Into the Fire: Addressing Opioid Use Disorder in the Setting of Fentanyl | Daniel Warren  | Emerald I & II     |
| 3:30 p.m. - 4:45 p.m. | BREAKOUT: Psychiatric Residential Treatment Facility (PRTF) Panel                                    | Lori Gonzales, Brenda Soto, U. Diane Buckingham, Cassandra Sines, Becky Austin-Morris, Linda Buchheister | Wheat              |
| 3:30 p.m. - 4:45 p.m. | BREAKOUT: Decoding Military Mental Health  | Bryson Bower, Holly Cavender   | River              |
| 3:30 p.m. - 4:45 p.m. | BREAKOUT: Triggered by Clients: Fuel for Your Personal Growth  | Mindi Kessler  | Emerald III-V      |
| 3:30 p.m. - 4:45 p.m. | BREAKOUT: Utilizing Data to Drive Business Decisions   | April White, Shedreese Colding-Scott, Heather Rush, Percy Turner, Tara Gregory                           | Sunflower Ballroom |
| 3:30 p.m. - 4:45 p.m. | BREAKOUT: Employment Law Part 2  | Gregory Meihn  | Bison              |
| 3:30 p.m. - 4:45 p.m. | BREAKOUT: Panel: Update on Specialty Courts in Kansas  | Mark Simpson, Judge Pokorny, Shannon Buregge, Sharon Zehr, Robert Wonnell                                | Homestead          |

## Schedule of Events - Friday, Sept. 15

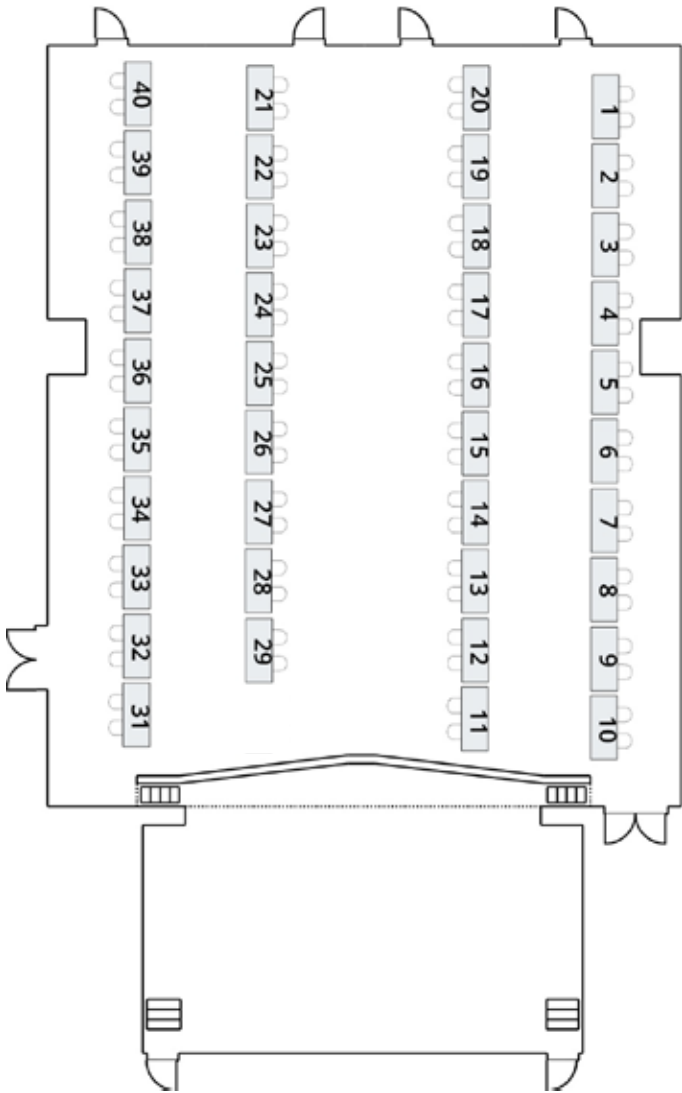
| TIME                   | SESSION                   | SPEAKER(S)             | ROOM               |
|------------------------|---------------------------|------------------------|--------------------|
| 7:30 a.m. - 8:45 a.m.  | Breakfast Buffet          |                        | Sunflower Ballroom |
| 7:30 a.m. - 12:00 p.m. | Registration Open         |                        | Foyer              |
| 9:00 a.m. - 12:00 p.m. | Ethics Update             | Dr. David Barnum       | Sunflower Ballroom |
| 8:00 a.m. - 12:00 p.m. | NFMH Settlement Agreement | Melissa Bogart Starkey | Emerald I & II     |

# Floor Plan



# Exhibitor Map & List

## Shawnee Ballroom



| BOOTH | EXHIBITOR   |
|-------|---|
| 1     | innovaTel Telepsychiatry                                    |
| 2     | Qualifacts  |
| 3     | Kansas Department for Aging and Disability Services (KDADS) |
| 4     | High Plains Mental Health Center                            |
| 5     | Streamline Healthcare Solutions                             |
| 6     | Camber Children's Mental Health                             |
| 7     | Mission Driven Data   |
| 8     | Teva Pharmaceuticals  |
| 9     | Sunflower Health Plan                                       |
| 10    | Johnson County Mental Health                                |
| 11    | Johnson and Johnson Health Care Systems, Inc.               |
| 12    | Ucare   |
| 13    | Mid-America Addiction Technology Transfer Center            |
| 14    | Centurion   |
| 15    | HealthSource Integrated Solutions                           |
| 16    | Neurocrine  |
| 17    | Netsmart  |
| 18    | KU School of Welfare  |
| 19    | Oral Health Kansas, Inc.                                    |
| 20    | Eleos Health  |
| 21    | Valley Hope Addiction Treatment                             |
| 22    | Bert Nash Community Mental Health Center                    |
| 23    | Molina Healthcare   |
| 24    | Mid-America Mental Health Technology Transfer Center        |
| 25    | Integrated Psychiatric Consultants                          |
| 26    | United Healthcare   |
| 27    | Guardian Pharmacy of the Heartland                          |
| 28    | Aetna Medicare Solutions                                    |
| 29    | Electromedical Products International, Inc.                 |
| 31    | CareSource  |
| 32    | Family Readiness Program                                    |
| 33    | Mirah   |
| 34    | Kansas Suicide Prevention HQ                                |
| 35    | Aetna Better Health of Kansas                               |
| 36    | KanCare Ombudsman Office                                    |
| 37    | Briana Goff   |
| 38    | Ed O'Malley   |
| 39    | Mindi Kessler   |
| 40    | Conrade Insurance   |





## Combat workforce challenges with innovaTel Telepsychiatry



"Prior to the start of our partnership with innovaTel in August of 2019, we experienced seasons where we only had one psychiatrist serving our entire agency, which required us to rely heavily on locum providers. Recruiting psychiatrists to rural and frontier areas is incredibly difficult."

**-Walt Hill, CEO of High Plains Mental Health Center**

Learn how innovaTel Telepsychiatry helped High Plains meet its CCBHC requirements and expand their care delivery services by [downloading our CCBHC Success Story here.](#)



## **Molina Healthcare is proud to support the 2023 Annual Conference for Behavioral Health!**

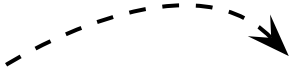
Thank you, **Association of Community Health Centers of Kansas**, for working so hard to improve the mental health of Kansans.





# Sunflower Health Plan is a Proud Sponsor of the 2023 Annual Conference for Behavioral Health

Professionals, scan the code to learn how Sunflower Health Plan can help you and the people you serve.



*Scan Me!*



Medicaid | Marketplace | Medicare

[SunflowerHealthPlan.com](https://SunflowerHealthPlan.com)

1-877-644-4623 (TTY 711)



**There  
for  
what  
matters**



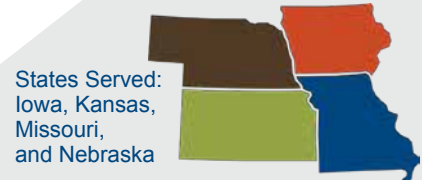
**United  
Healthcare<sup>®</sup>  
Community Plan**

# CareSource HealthAlliance



---

*Working Together for a Healthier Kansas*



**Mid-America ATTC:**

- Provides intensive technical assistance to support organizations and systems' efforts to implement evidence-based practices and improve quality of care
- Develops on-line and in-person trainings and provides support to organizations in their adoption of innovative practices
- Leads in-person and virtual learning communities
- Produces and disseminates resources through quarterly e-newsletter and website

Mid-America Addiction Technology Transfer Center (Mid-America ATTC) is a collaboration between University Health Behavioral Health (UH-BH) and the Collaborative to Advance Health Services at the University of Missouri-Kansas City School of Nursing. Mid-America ATTC provides FREE technical assistance, training, and resources for multidisciplinary practitioners, agencies, and communities serving people who are impacted by substance use disorders.

**LEARN MORE**



To learn more about our FREE services visit:  
[atcnetwork.org/midamerica](http://atcnetwork.org/midamerica)



# Providing hope and healing

**Camber Children's Mental Health**  
 is the *leading* regional provider of inpatient and residential children's mental health services.



**Providing care at three treatment centers:**

- Hays:** 3000 New Way Blvd., Hays, KS 67601
- Kansas City:** 4300 Brenner Dr., Kansas City, KS 66104
- Wichita:** 1507 W. 21st St. N., Wichita, KS 67203



Scan to learn how Camber supports youth & families.

[cambermentalhealth.org](http://cambermentalhealth.org)



**Camber™**  
 Children's Mental Health  
 KVC HEALTH SYSTEMS

*We all need connection.*

# Technology That Powers Care



Consumer Engagement



Mobile Crisis



Data Insights



Electronic Health Record



Population Health Management



Revenue Cycle Management



Interoperability



Virtual Care



Workforce Efficiency



Teva is committed to providing support and enhancing care for everyone living with tardive dyskinesia.

LEARN MORE AT TEVA BOOTH





Partnering with communities  
and providers to power  
**better health for all.**



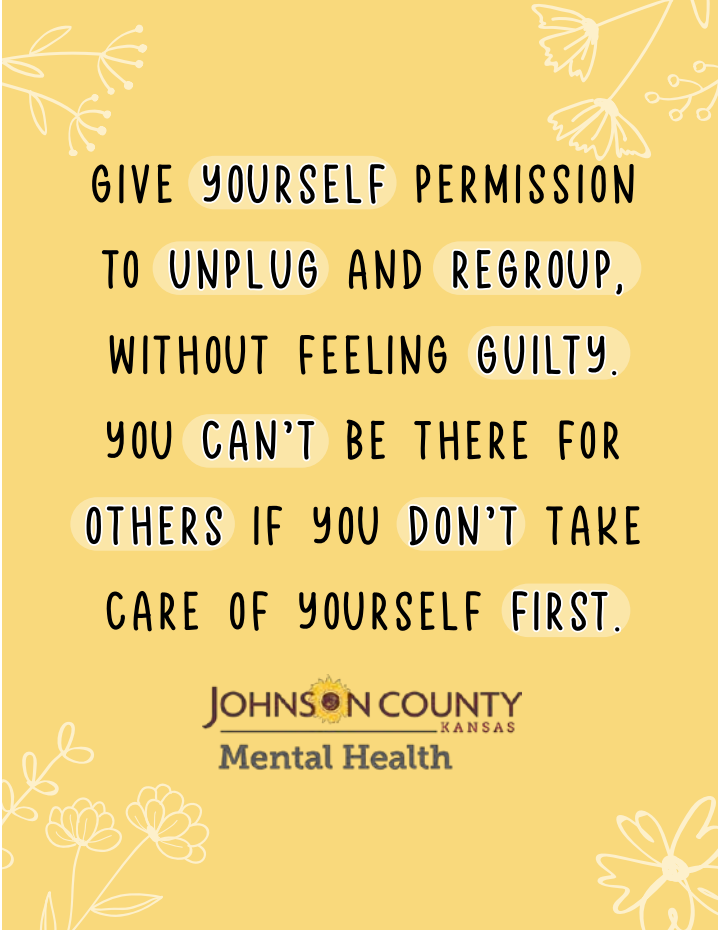


# RESPECT MENTAL HEALTH

IT'S OKAY TO NOT BE OKAY. Stress, isolation, anxiety, job loss, and depression are hard on all of us. Reaching out to someone can be difficult, but it's a crucial first step. We're here to help – contact us today.

Schedule virtual or in-person care  
785-843-9192 | [bertnash.org](http://bertnash.org)

*Bert Nash*  
COMMUNITY MENTAL HEALTH CENTER



GIVE YOURSELF PERMISSION  
TO UNPLUG AND REGROUP,  
WITHOUT FEELING GUILTY.  
YOU CAN'T BE THERE FOR  
OTHERS IF YOU DON'T TAKE  
CARE OF YOURSELF FIRST.

JOHNSON COUNTY  
KANSAS  
Mental Health



Mid-America (mid) Region (T)  
MHTTC Mental Health Technology Transfer Center Network  
Funded by Substance Abuse and Mental Health Services Administration

The Mid-America MHTTC provides free training and technical assistance to mental and behavioral health providers across Missouri, Iowa, Nebraska, and Kansas.

Our resources include...



Webinars



Online Courses



Learning Communities



Downloadable Toolkits

Get connected!

- @MidAmericaMHTTC
  - /MidAmericaMHTTC
  - /company/Mid-AmericaMHTTC
- [mhttcnetwork.org/mid-america](http://mhttcnetwork.org/mid-america)

...and much more!



## Correctional health is community health

Centurion is hiring Licensed Mental Health Professionals across the state:

Ellsworth | El Dorado | Hutchinson | Lansing | Winfield

### Did you know?

MORE THAN 50% OF THE INCARCERATED POPULATION HAS A MENTAL HEALTH DISORDER

AT LEAST 95% OF INMATES WILL BE RELEASED FROM PRISON AND BACK TO THE COMMUNITY

For more information, contact:

CarLee Ozuna

785.301.8212 | [cozuna@teamcenturion.com](mailto:cozuna@teamcenturion.com)

[CenturionJobs.com](http://CenturionJobs.com) | Equal Opportunity Employer



Scan to apply!



# MISSION DRIVEN DATA

Is your agency ready to report CCBHC data?

How we can help:

- *Data tools for Credible EHR users.*  
With Janet™ you can visualize, analyze, and understand your data in Microsoft Power BI.
- *Consulting to expand your capacity.*  
Identify gaps, increase efficiency, and improve outcomes with support from our team of experts. We can help with your billing matrix, workflows, and forms, too!
- *A Community of like-minded professionals.*  
Access guest speaker events, co-working sessions, and monthly workshops in a no-cost virtual space.



Curious about working together?  
Scan to connect.

[www.missiondrivendata.com](http://www.missiondrivendata.com)



Your data partner to prove and improve behavioral health outcomes

[mirah.com](http://mirah.com)



//// Help for today. Hope for tomorrow.

**Residential | Medical Detox | IOP**

Central KS Moundridge / Wichita  
Northeast KS Atchison / Overland Park  
Northwest KS Norton

24/7 Admissions  
(855) 544-8384  
[ValleyHope.org](http://ValleyHope.org)

## Creating a future where disease is a thing of the past.

At Janssen Neuroscience, we have a bold and ambitious goal – to create a future where serious mental illness and debilitating neurological disorders are a thing of the past. We work hard to help heal minds and bodies, restoring hope for better lives. Learn more at [www.janssen.com](http://www.janssen.com).

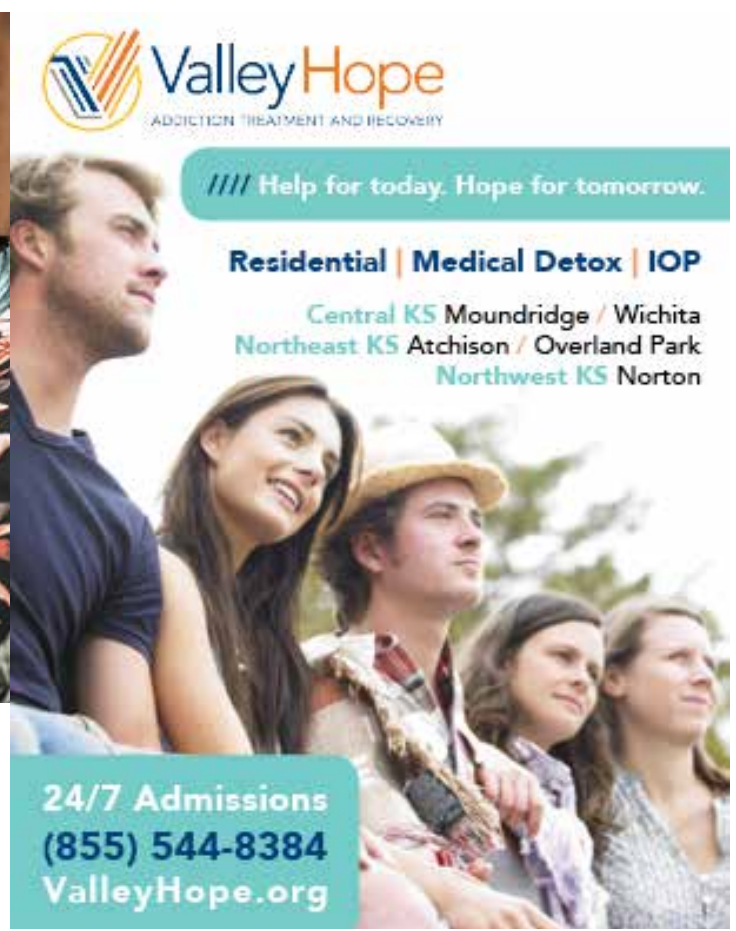


© Johnson & Johnson Health Care Systems, Inc. 2023 04/23 cp-311245v2

PHARMACEUTICAL COMPANIES OF Janssen



The image depicted contains models and is being used for illustrative purposes only.





**50%+ less documentation work.  
3-4x better symptom reduction.**

**More Care. Less Ops.**

**CareOps Automation**

For care providers.  
For compliance teams.  
For health plans.



Scan to check out  
Eleos in 2 minutes  
<https://eleos.health>



Streamline Healthcare Solutions  
Celebrates Our 20th Anniversary  
and Our New Brand

SmartCare™ EHR  
Control | Flexibility



**Streamline SmartCare™ | Advancing Life**

Streamline's SmartCare™ Electronic Health Record (EHR) platform provides behavioral health organizations with a combination of control and flexibility that empowers them to advance the lives of those they serve.

For more information, contact Jon Barnes  
[jon.barnes@streamlinehealthcare.com](mailto:jon.barnes@streamlinehealthcare.com)



**Center for Community  
Engagement & Collaboration**

Working collaboratively with stakeholders across systems to pursue collaborative projects & investing in organizational capacity, with the aim of promoting social, economic & environmental justice.

**2 DIVISIONS**

**Agency Capacity-building & Community Evaluation**  
Support social service agencies' needs for capacity-building and collaborative evaluation, as well as the broader community's interests in evaluation and strategic partnerships.

**Professional Education**  
Offer new, innovative methods of professional education appropriate for the fast-paced, technology-driven, resource sparse social services sector.

Both divisions work to promote workforce support and development.

**COLLABORATE WITH US**  
[socwel.ku.edu/cccec](http://socwel.ku.edu/cccec)

